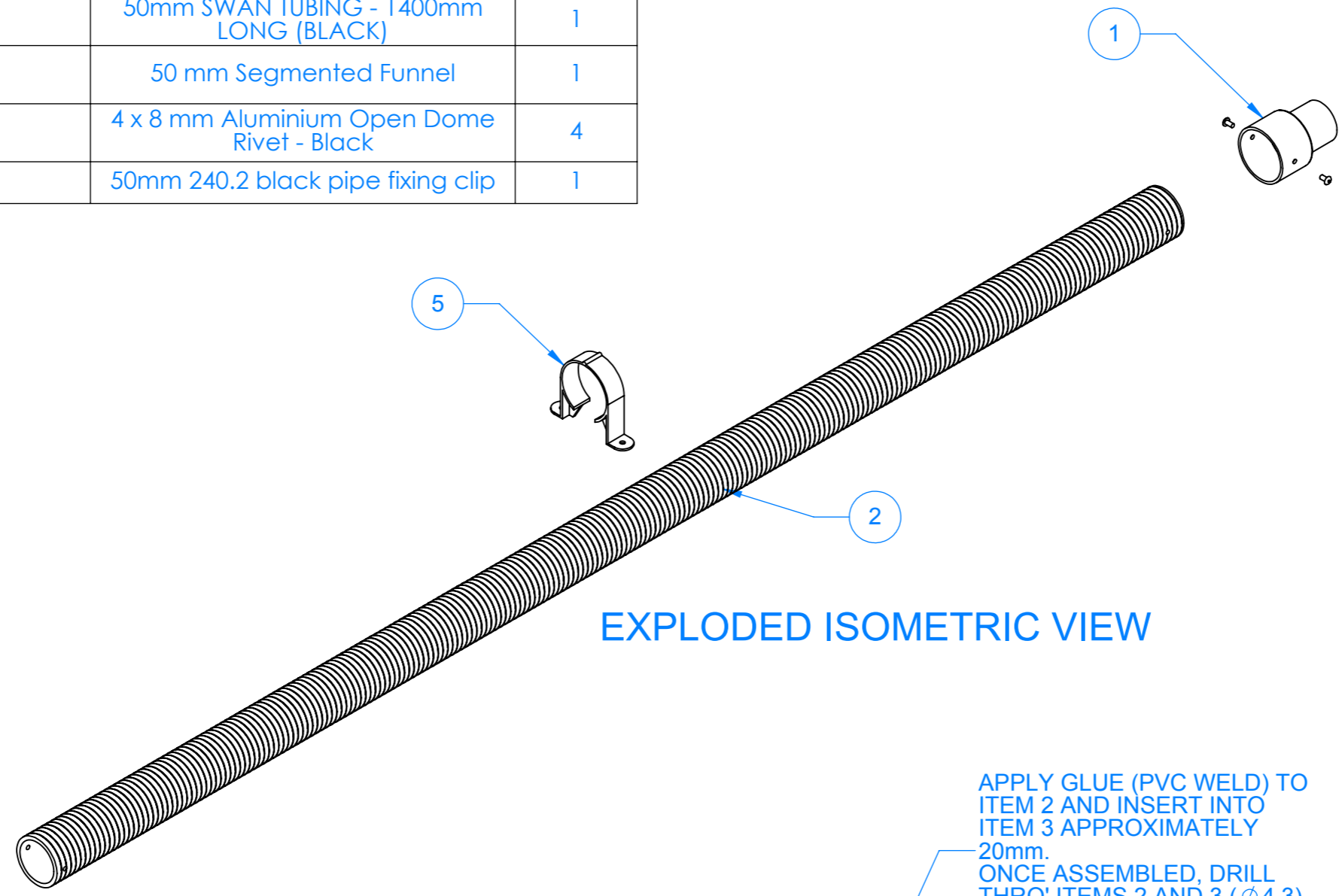


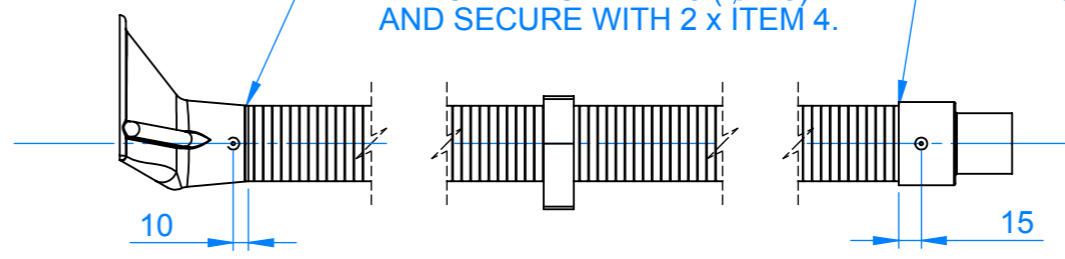
ITEM NO.	PART NUMBER	DESCRIPTION	QTY.
1	P1100602	PLUG-50MM	1
2	P1100213	50mm SWAN TUBING - 1400mm LONG (BLACK)	1
3	P1100620	50 mm Segmented Funnel	1
4	P0801106	4 x 8 mm Aluminium Open Dome Rivet - Black	4
5	P0609017	50mm 240.2 black pipe fixing clip	1



EXPLODED ISOMETRIC VIEW

APPLY GLUE (PVC WELD) TO ITEM 2 AND INSERT INTO ITEM 3 APPROXIMATELY 20mm. ONCE ASSEMBLED, DRILL THRO' ITEMS 2 AND 3 ($\phi 4.3$) AND SECURE WITH 2 x ITEM 4.

APPLY GLUE (PVC WELD) TO ITEM 2 AND INSERT INTO ITEM 1 AS FAR AS POSSIBLE. ONCE ASSEMBLED, DRILL THRO' ITEMS 1 AND 2 ($\phi 4.3$) AND SECURE WITH 2 x ITEM 4.



ASSEMBLED SIDE ELEVATION

Released



1400 X 50mm STAY PUT ARM WITH PLENUM FUNNEL

DRAWN BY: J CROOK
 APPROVED BY: C.A.
 DRG No: A1081005

ECN	REV	CRT'D	APP	DATE	DETAILS
1st Rel	01	J.C.	C.A.	25/01/2018	1st Release

THIS DOCUMENT IS THE PROPERTY OF BOFA INTERNATIONAL LTD. NO INFORMATION CONTAINED HEREIN MAY BE REPRODUCED OR DISCLOSED IN PART OR IN FULL WITHOUT THE EXPRESS WRITTEN CONSENT OF BOFA.

UNLESS OTHERWISE SPECIFIED:
 • ALL DIMENSIONS IN mm
 • DO NOT SCALE
 • TOLERANCES: +0.0 / -1.0
 • DEBURR AND BREAK SHARP EDGES
 • IF IN DOUBT ASK
 • DO NOT SCALE DRAWING

MAT'L:
 ISSUE NUMBER: 01
 DATE OF ISSUE: 25/01/2018
 SHEET 1 OF 1
 SCALE: 1:5
 3RD. ANGLE PROJECTION
 SHEET SIZE: A3